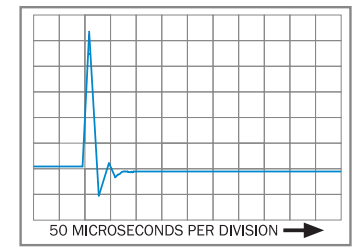
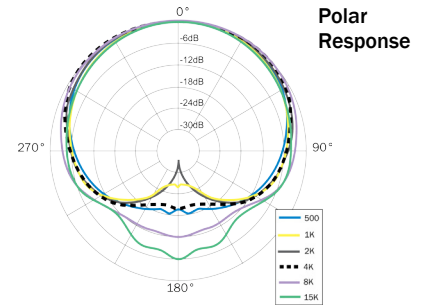


- **High Definition Microphones[™] for Conference Rooms and Fixed Sound Installations**
- **Near-perfect Polar Response (uniform frequency response at 0°, 45° & 90°)**
- **Can be Mounted in Wall, Ceiling or Conference Tables (includes lock nut)**
- **High Rejections of Sounds from the Rear of the Microphone**
- **Very High Intelligibility**
- **More Gain Before Feedback**
- **150Hz to 30kHz Frequency Response**
- **Very Easy to Position via Mini-gooseneck**
- **139dB Max Acoustic Input**
- **Requires 24 - 48V Phantom Power**
- **Available in Black, White, Silver or Stainless Steel**



Impulse Response

Architectural & Engineering Specifications 30kHz Cardioid

The microphone shall be a back-electret condenser type with a wide-range uniform frequency response of 100 Hz to 30 kHz and shall have an output level of 10mV/Pa. The microphone shall be of a single capsule, single membrane design with an impulse response rise time no longer than 25 microseconds, and total settling time, including rise time, no longer than 120 microseconds. The microphone shall have polar characteristics uniform in all planes to form a cardioid or hypercardioid of revolution and shall accept sound pressure levels up to 139dB producing no more than 3%THD. Dimensions of the microphone bodies shall be 4.495 in. (114mm) long by .920 in. (23mm) in diameter. Gooseneck lengths, respective of model shall be; IM3: 3 in. (76mm), IM6: 6 in. (152mm), IM10: 10 in (254mm), and the IM12: 12 in. (305mm). The maximum head diameter shall be .540 in. (14mm). The microphone body threading shall use the NPT standard of 1.660 in. (42.16mm) outer diameter 0.08696 in. (2.20878mm) thread pitch. The microphone shall be terminated with a male XLR-3 connector and shall require 24-48V phantom power. The microphone shall be made of metal with choice of finish. The Earthworks IM3, IM6, IM10 or IM12 (in black, white, stainless steel or silver) is specified.

High Definition Microphones[™] for Fixed Installations

The Earthworks IM Series[™] High Definition Microphones[™] provide astounding audio quality for fixed installations. The IM Series[™] can be custom mounted in a ceiling, wall or table and will provide the ultimate in sound quality, flexibility and ease of installation. The IM microphone's uniquely designed small head and flexible mini-gooseneck allow it to be easily and precisely positioned. The IM Series[™] near-perfect polar response will not beam or spotlight and will provide very high intelligibility. The frequency response of both the cardioid or hypercardioid at 90 degrees off-axis is within 2dB of the on-axis response (over its operating frequency range). This overall uniform frequency response of the hypercardioid is at least 5dB down at 90 degrees off-axis. This exceptional polar response allows the use of fewer microphones, while obtaining higher intelligibility and more gain before feedback.

Near-Perfect Polar Response

David Blackmer invented a number of new microphone technologies resulting in a totally new approach to microphone design. One such technology resulted in the creation of near-perfect polar patterns. When you look at a polar pattern of

an Earthworks microphone, the mid-frequencies, high-frequencies and low-frequencies all look very close to a "textbook" polar pattern. In practice this means the polar response of an Earthworks microphone is extremely uniform over its operating frequency range; the frequency response at 90 degrees off-axis is very close to the on-axis response. This uniform polar response results in less phase problems and much higher intelligibility at the sides of the microphone.

IM Series[™] Installation Microphones

The IM Series[™] provides a low profile, pristine sounding microphone solution for permanent installations. Featuring a flat frequency response and patented polar technology, orators will maintain the same intelligibility throughout the room without a reduction of sound level or loss of high frequencies, while obtaining more gain before feedback. The IM Series[™] installation microphones provide a 150Hz to 30kHz frequency response, near-perfect polar response with pristine audio in an attractive low-profile package with options of 3, 6, 10 or 12 inch mini-goosenecks in black, white, silver or stainless steel.

Specifications & Dimensions are on back of this page



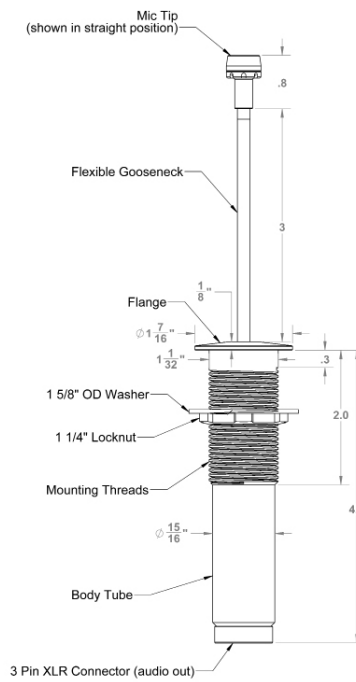


Special Order Options include custom microphone colors and custom gooseneck lengths.

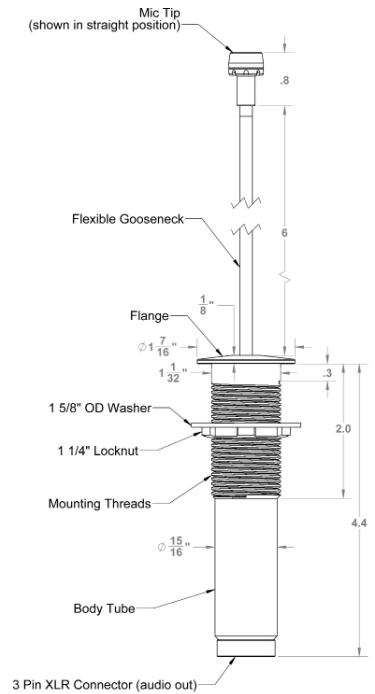
IM SERIES SPECIFICATIONS

Frequency Response:	100Hz to 30kHz
Polar Pattern:	Cardioid
Sensitivity:	20mV/Pa (-34dBV/Pa)
Power requirements:	24 - 48V Phantom, 10mA
Max Acoustic Input:	139dB SPL
Output:	XLR-3 (pin 2+)
Min. Output Load:	600 ohms between pins 2 & 3
Noise:	16dB SPL (A weighted)
Dimensions:	See drawings at right
Color:	Black, White, Silver or Stainless Steel
Weight:	0.28 lbs. (125g)

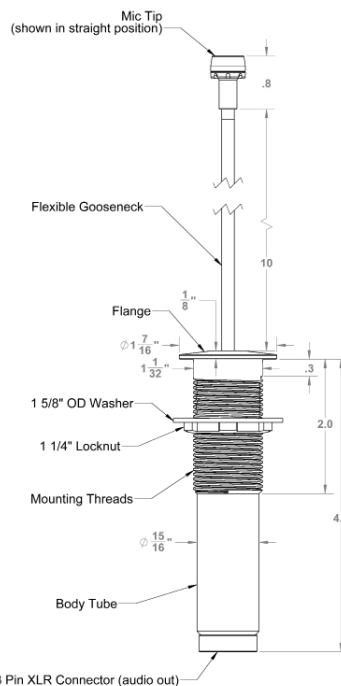
IM3



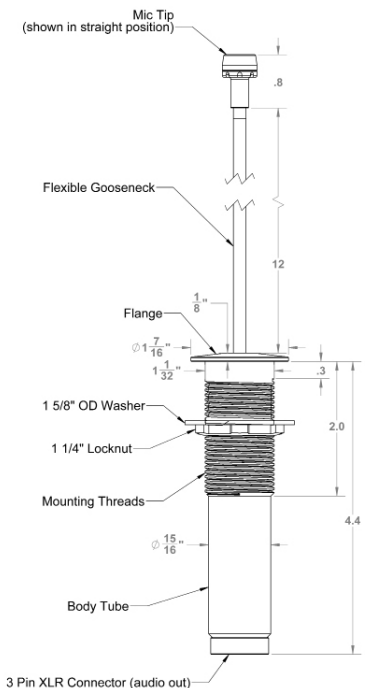
IM6



IM10



IM12



Specifications Subject to Change without Notice